

PULSARLUBE M

The New Generation of Single Point Lubricators



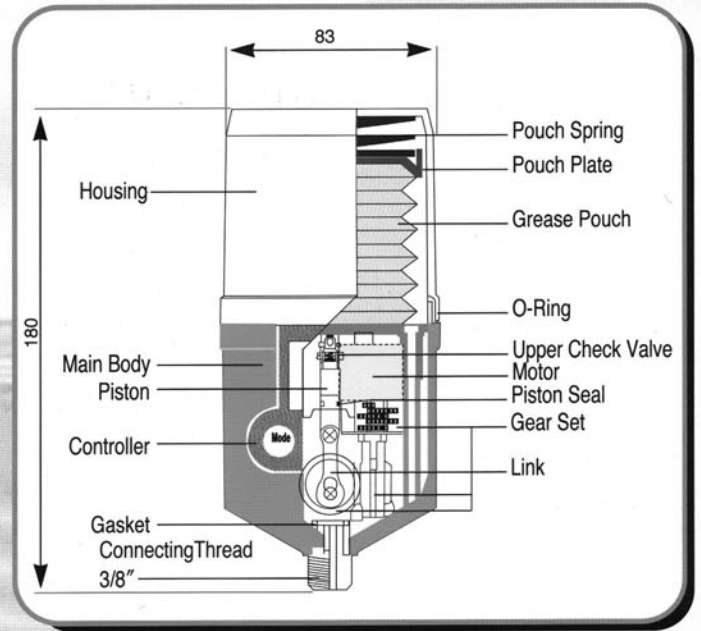
PULSARLUBE U.S.A., INC.

Operating Principle

PULSARLUBE M, a single-point automatic grease dispenser is designed to ensure reliable lubrication and cut lubrication costs with an advanced electronic control mechanism. It consists of a vertical feed pump, motor/gear set, and microprocessor control system, allowing operating pressure up to 20kg-f/cm² (280psi).

The lubricant is supplied in 125cc or 250cc **PULSARLUBE M** pouch. Grease pouch and battery pack are replaceable in one package. **PULSARLUBE M** is designed to operate across a wide temperature range from -15 to +60°C (from 5 to 140°F). A carefully selected full range of high performance lubricants enables accurate selection of grease: i.e. mineral based multipurpose, heavy duty, high speed, fully synthetic food grade (USDA H1), high temperature and cold temperature lubricants.

PULSARLUBE M offers 5 optional dispensing rates from 1 to 12 months in a single unit.



Features

- High operating pressure (up to 20kg-f/cm² : 280psi)
- Anti-vibration, break-free design (low weight balance)
- Precise dispensing control
- Cost competitive
- Compact and convenient
- Easy to read LCD display
- Wide operating temperature range

Adjustment Guidelines

In the chart below are some guidelines for bearing lubrication requirements. Requirements may vary with individual bearing types or operating conditions.

Ball & Roller Bearings

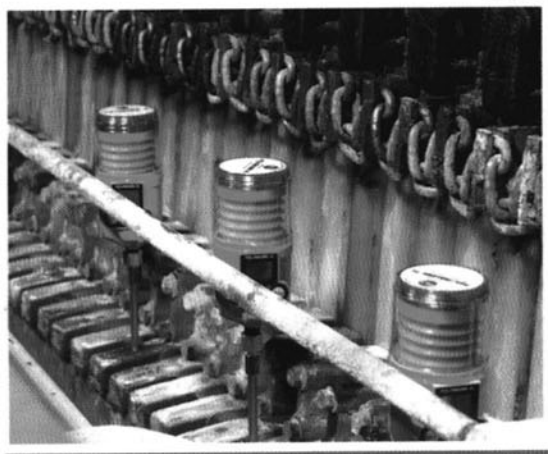
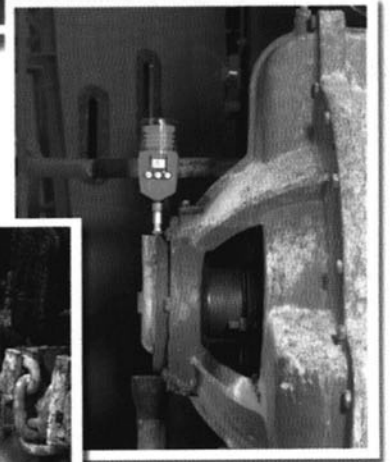
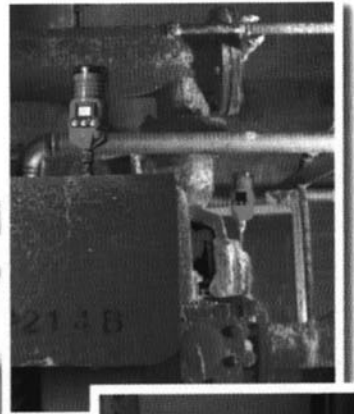
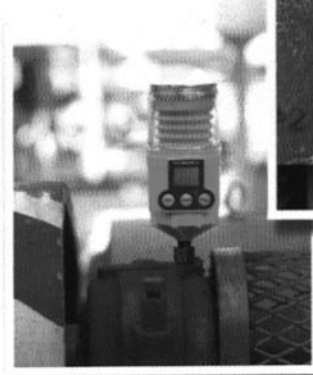
Bearing Shaft Diameter	125cc	250cc	Dispensing Equivalents
105-120mm(4-1/8" ~ 4-3/4")		1 month	8.3cc/day
88-105mm(3-1/2" ~ 4-1/8")	1 month	2 month	4.2cc/day
79-87mm(3-1/8" ~ 3-1/2")	2 month	3 month	2.8cc/day
63-78mm(2-1/2" ~ 3")	3 month	6 month	1.4cc/day
49-62mm(2" ~ 2-1/2")	6 month	12 month	0.7cc/day
25-48mm(1" ~ 2")	12 month		0.3cc/day

Specification

Grease pouch	:	125cc or 250cc (replaceable)
Power supply	:	DC 4.5 V (replaceable)
Operating pressure	:	up to 20kg-f/cm ² (280psi)
Operating temperature	:	from -15 to + 60°C (from 5 to 140°F)
Temperature range can be varied by either a relative humidity or heat radiation in the application.		
Lube dispensing rate	:	1,2,3,6, and 12 months
Lube cycle	:	approx. 20 seconds/cycle
Dispensing volume	:	0.347cc/cycle
Dispensing accuracy	:	±3%
Output thread	:	Brass 3/8"(NPT or BSP)
LCD screen displays	:	Dispensing rate set Time left till replacement Low battery power * Motor overload * Low grease level * * Error messages

Application

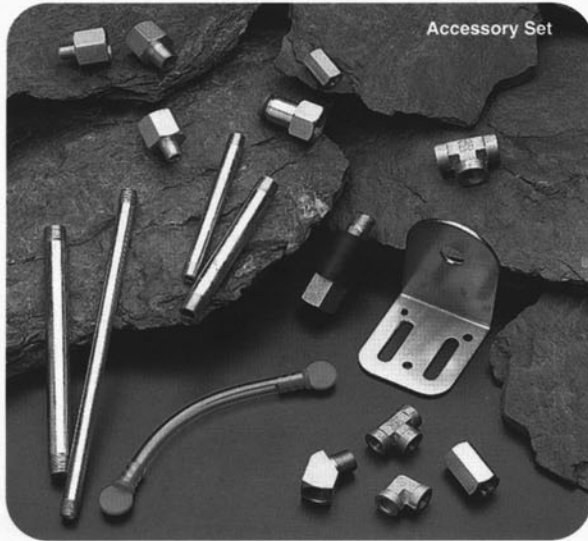
- Anti-friction roller bearings and journals for applications including:
 - Access is hazardous or inconvenient.
 - Contamination is present.
 - Insufficient staff to guarantee lubrication of bushings.
- Shafts, Slides, Sheaves
- Common Applications:
 - Conveyors
 - Motors
 - Agitators
 - Pumps
 - Overhead cranes
 - Air circulating systems
 - Draglines
- Widely used in:
 - Steel
 - Mining
 - Cement
 - Automotive
 - Petro-Chemical
 - Pulp & Paper
 - Electronics
 - Food Processing
 - Beverage & Bottling
 - Metro system
 - Commercial Construction



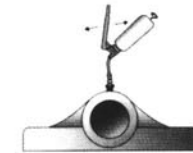
Grease Selection Guidelines

Model	Grease Type	Description
PL1	Multi Purpose	High Performance NLGI#2 EP grease for multipurpose applications in low to moderately high temperature or loaded applications. Dark gray colored (contains MoS ₂).
PL2	Heavy Duty	High Performance NLGI#2 EP grease for heavy-duty applications. Dark gray colored (contains MoS ₂).
PL3	High Speed	High Performance NLGI#2 grease specially designed for high-speed applications (above 3,000 rpm).
PL4	Food Grade	USDA H1 rated NLGI#1 High Performance Aluminum Complex grease for food applications.
PL5	High Temperature	Fully synthetic High Performance NLGI#2 grease for extreme temperature applications.
PL6	Multi Purpose	Yellowish colored PL1 for applications where use of dark color grease is not desirable.
PL7	Cold Temperature	High Performance EP grease specially designed for cold temperature applications (below 0°C/32°F).

OEM filling is available on demand. For specific terms and conditions, please contact your local distributor or the manufacturer.



First Installation



1. Purge bearing with grease gun



2. Remove grease nipple and fit adapter as required



3. Fit New PULSARLUBE M unit



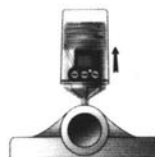
4. Set dispensing rate

Operation

- 1) Depress POWER button for 2 seconds to turn unit on.
- 2) Confirm LCD turned on and red LED blinks.
- 3) Test unit operation by test mode:
 - Depress POWER button first and then depress 125/250cc button within 2 seconds.
 - Unit will continuously operate unless POWER button is depressed. Otherwise, please refer to troubleshooting guideline of installation instruction.
 - To deactivate TEST mode, depress POWER button again. Unit will stop testing within 2 seconds.
- 4) Depress MODE button to set dispensing rate.
- 5) Each time MODE button is depressed, the dispensing rate changes in ascending frequency i.e. 1, 2, 3, 6 and 12month.

For safe use and proper installation, please refer to installation instructions or preferred fitting methods available from your local distributor or the manufacturer.

Change of Service pack (Grease Pouch & Battery Pack)



1. Remove dust cover



2. Unscrew top cover



3. Discard used battery pack and grease pouch



4. Install new battery pack



5. Fit new grease pouch



6. Screw top cover



7. Depress RESET button and set dispensing rate



8. Replace dust cover

PULSARLUBE U.S.A., INC.

2360 East Devon Ave., Suite 2006
 Des Plaines, Illinois 60018
 Tel : (847)795-0591
 Fax : (847)699-1022
 http : //www.pulsarlube.com
 e-mail : klt1250@aol.com

Distributor

✕ WARRANTY

PULSARLUBE U.S.A., INC. guarantees the product to be free of defects in material and workmanship for a period of 12 months from date of delivery. Warranty is limited to replacement of the product. There is no consequential loss covered by the Warranty. The Warranty will be void if the unit is mistreated, tampered with, used in a hostile chemical environment, used under water, maliciously damaged, used outside the specified ambient operating temperature range of -15 to +60°C (5 to 140°F), or when used with other than the pulsarlube service pack. Please contact your local distributor or the manufacturer for the validity of the Warranty.